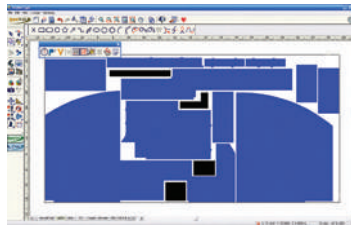
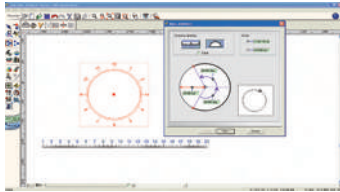


Ruler/Dialer creation
Router8 provide a Ruler/Dialer wizard to let user create ruler or dialer just steps, save design time.



FREE FORM NESTING

Entry & Professional Nesting tools help save more materials and money. RouterType will create as many extra layers you need to nest all your pieces, with ability to set tool clearance, spacing and angle rotation(s).

APPLICATIONS

- Sign makers
- ACM cutting
- Cabinet makers
- Engraving
- Packaging (dies)
- Carpet cutting
- Marquetry
- Stone carving
- POP/POS making
- Plastic routing
- Countertop cutting
- and more...

ADVANCED NODE EDITION

Industry leading advanced node editing allows the user to smooth curves, straighten lines, square or round corners in a single click. Additional Features include adding or subtracting nodes, simplifying curves, moving start points, and opening or closing contours.

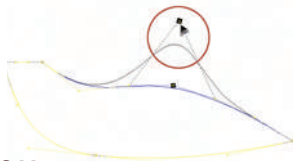
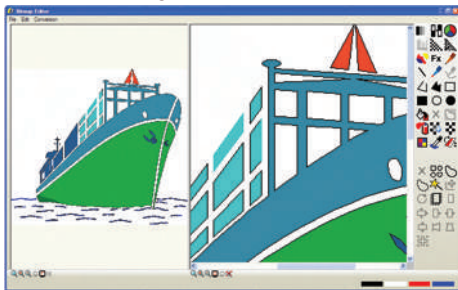


IMAGE EDITION

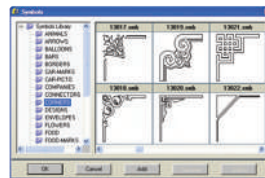
If you need some graphic capabilities, a bitmap editor is integrated at no extra cost. The bitmap editing feature will modify the color attributes such as number of color bit and grayscale and painting with pencil, brush and spray. The bitmap editor will also resize, resample, skew, mirror and rotate the image, etc...



Process

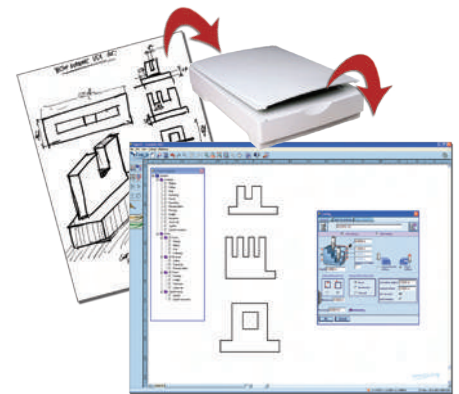
IMPORT FORMAT

- DXF, ISO, HPGL, IGES, STEP, STL, SAT, *NC, WMF
- EPS, AI, BMP, DIG, PNG, TIFF, JPG, +OLE protocol



SYMBOL LIBRARY

Populate your library with your own artwork or choose from thousands of symbols available in RouterType.



RASTER-to-VECTOR

This feature converts any graphical image to geometric vectors. Conversion can be made with black and white or full color artworks. Advanced parameters help you handle images of any quality. Center-line vectorization is also available.

Create sign with Variables and Matrix
Router8 supports variable text and matrix, user can create signs in batch mode with these functions.



Envelope

Envelope feature enables you placing a text inside an envelope, the text would be auto scaled and transformed. Router'8 provides envelope samples in symbol library, you can create your envelope yourself.

Tools

TEXT FEATURE

Industry leading text creation that includes standard layout features. Use any TrueType font or the fonts provided by Type3. Advanced tools such as kerning, inclining, spacing, and more gives you 100% control of the font modification. Even create your own library of fonts. Text can even be created and edited along a curve or imported directly from a Word document as editable text.





APPLICATIONS

- V-carve
- Easy tool creation wizard
- Sharp angle finishing
- Bevel
- Chamfrein
- Ramping out
- Finishing
- Cutting
- Threading

2D & 2.5D MULTI-TOOL SEQUENCE

Create multiple toolpaths and sequence them as one to optimize the machining time and distance. Add as many tools you like for roughing, semi-roughing and finishing machining strategies. Have full control on the parameters of each machining job (depth, step-over, etc...).



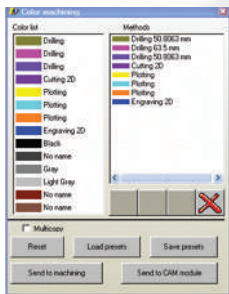
MACHINING TIME ESTIMATE

Preview the estimated time of your machining. Export machining report for your operators.



Enhanced CAM functions

Router'8 CAM module has been totally revamped to always and better fit the needs of professional Signmakers: Increased production, improved quality and maximum security with optimized toolpath calculation.



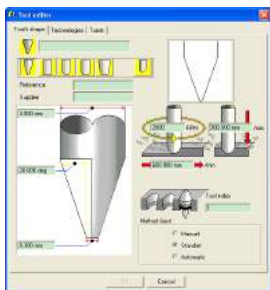
COLOR MACHINING

Save time in your process. Under a color, save all your machining strategies and parameters. Greatly reducing the time from vectors to G-code.



The best G-CODE ever

Toolpath strategies for 2, 3 and 4 axis deliver fast, reliable and very accurate NC-codes.



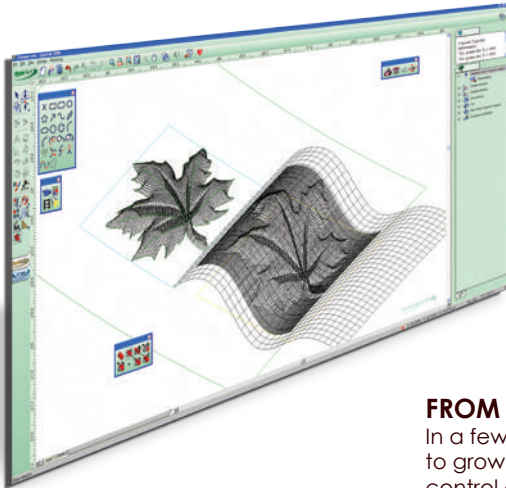
TOOL CREATION WIZARD

Highly graphic and very intuitive, you can create tools of almost any shape and customize your own parameters (feed rate, plunge speed, spindle speed...). You can also set tool numbers for your Tool Changer. Special tools can also be designed. Security of depth is also available.



INTAGLIO (Advanced V-Carve)

In a single step, make beautiful 3D recessed engraving. It is especially adapted for 3D engraving with a conical tool. The depth of your engraving adjusts with the width of the contours.



APPLICATIONS

- Sign making
- Woodworking
- Thermoforming
- 3D machining
- Moulding
- Sculpted 3D plaques
- Molded letters
- Ornaments
- GIS Terrain machining

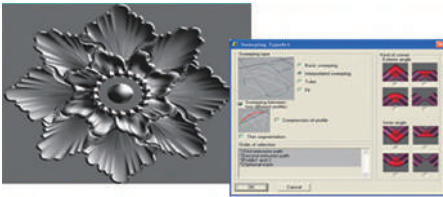
FROM ARTWORK TO 3D

In a few clicks, TypeArt features take 2D contours to grow on the 3D-Relief. The user has complete control over the height, profile, accuracy and flow of the designs using user friendly design tools for any artistic challenge.

Innovation

3D VIEWER

In the design process, the user can view the shape as a solid and orientate and zoom the object in any direction for optimal view.



SURFACE TOOLS

They deliver entry and advanced surface tools for more free form designs. Easily create cones, spheres, torus, cylinder, etc... and also benefit from tools such as surface revolution, network surface, coons network, rules surfaces, etc... This section also offers professional projection and wrapping on any surface.

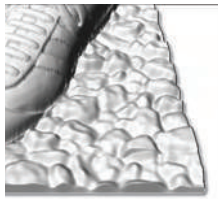


Sweeping TypeArt

Powerful sweeping function with multiple options let user create complex typeart in a easy way.

3D TEXTURE

This feature allows you to fill a 3D-Relief with 3D textures. Those can be easily created using Fractal or Spread modes and you can even get a texture from the database. Any 3D-Relief can also be used as a texture.



REALISTIC RENDERING

Giving Life to Your 3D Models. TypeView allows you to beautifully display and create a scene around your TypeArt objects. This new Rendering platform offers all the functionality you can find in a professional photographer's studio, thanks to all the possible effects with light, scenery, different materials, transparency, etc... The renderings created using this module can be sent by e-mail, printed and used for your catalogs or marketing material.

SCULPTED 3D PLAQUES

From artwork to 3D file, Type3 delivers all the technology necessary such as bas-relief detailing, 3D boolean, 3D wrapping, sculpting, texturing for the best 3D plaques on the market.



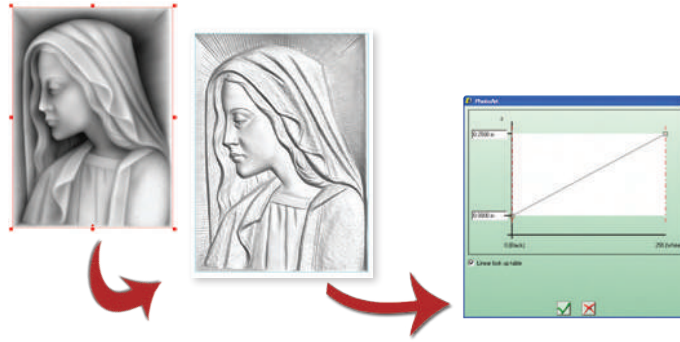
MALE & FEMALE

In a single click, convert your model in male or female. Options include a full mirror of only mirroring specified axis.

Revolutionary

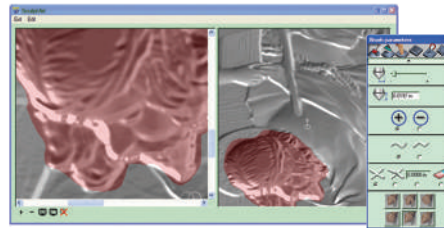
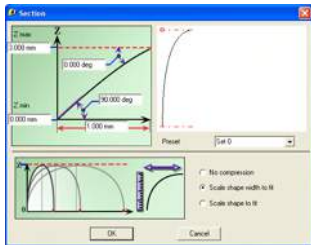
FROM GRAYSCALE TO 3D

Easily convert a grayscale image into a 3D-Relief (and vice-versa) with full control on the progression result. The higher the grayscale the higher the Z-height, the darker the grayscale the lower the Z-height and all other shades of gray fall in-between.



Creat section with compress mode
Router8 provides more options while creating section, software can auto scale shape in width or height to generate a more smooth and beautiful relief.

Artistic



TOOL TESTER

This feature is designed to help you make the best tool decision to save machining time. It will graphically simulate the theoretical result of a 3D-Relief object. It will help you select the best tool for the job. In addition to the theoretical model and the machined model, a view of the difference between the two models is also produced.



3D-CLAY-SCULPTING TOOLS

Like sculpting by hand, this section delivers features such as adding, pushing, hand-carving, smoothing... all you need to make a more realistic piece. Use a mask to protect sensitive areas and mirror to duplicate some sculpting operations.

Powerful

BAS RELIEF ENHANCEMENT

This function will put enhanced detail into a 3D scene. It enables some details that would have been completely flattened to remain visible. The user controls the width, height, and scale of the details.



DUPLICATION

Many of the same duplication tools in the 2D are also available in 3D relief. Duplication features include duplication 3D reliefs in an array, matrix, and along a curve.



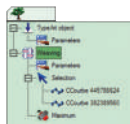
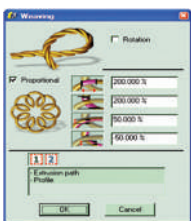
DEFORMATION

This feature will deform a 3D-Relief into a defined area. It is particularly useful to create a 3D decoration in a linear mode and then to deform it to suit a curve frame and other decorations.

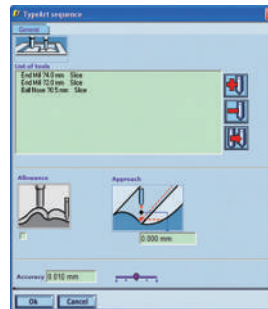
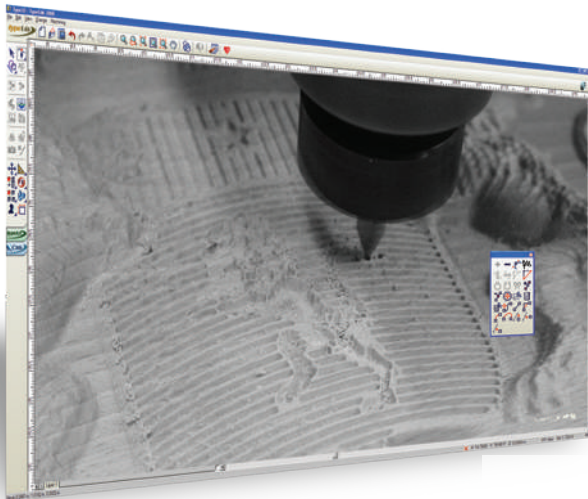


WEAVING (Celtic-style design)

This function will automatically produce a "Woven" effect by providing a profile path and the shape cross-section. There are several options to control how the intersections of the profiles are controlled in 3D.



FROM 3D MODEL TO CNC



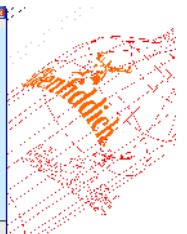
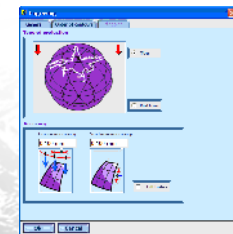
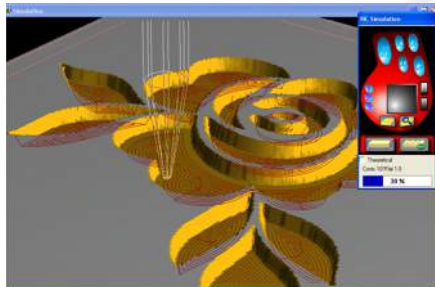
- APPLICATIONS**
- Sign making
 - Woodworking
 - Thermoforming
 - 3D machining
 - Moulding
 - Sculpted 3D plaques
 - Molded letters
 - Ornaments

3D SEQUENCE

This strategy will quickly calculate a toolpath using several tools from the largest to the smallest one. The toolpaths are optimized so that the next tool only cuts the areas that have not been milled previously.

FINISHING STRATEGY

To optimize your machining time and to obtain the best result, you can customized this strategy. You can set the thickness of the passes, the orientation, the type of pass (contouring or raster), step-over, whether you are machining on a flat form or on a complex shape.

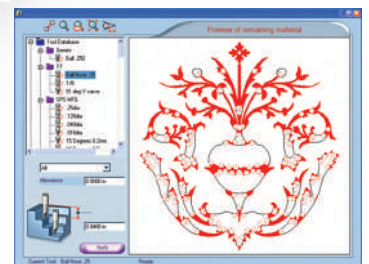


TOOLPATH MAPPING

Select the surface and the pattern to project, an extra tab Mapping appears defining your toolpath. See the section Mapping Tab in the overview about toolpath, software would auto map toolpath to the selected surface based on the setting. You can use the mapping command in the context menu of tool list also.

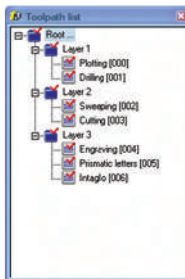
3D NC SIMULATION

Preview in real life your machining job through this video where you can see your tool (and not just a ghost-shape) running over your jobs. You have full control on the video simulation, by pausing, rewinding, accelerating or slowing. You can customize material type (wood, stone, metal, etc). This NC-Simulation will also show you the toolpath geometry, the air-moves, and more...



TOOLPATH MANAGEMENT

Just as the 3D relief has the history design tree, toolpath generation also uses this advanced technology. The system keeps track of each toolpath and its parameters. Each parameter is saved within the part and can be modified at any time in the future. Some key parameters that can be modified are machine depths, feeds and speeds, different tools and different shapes.



REMAINING MATERIALS

This feature is designed to help in your tool decision by showing you graphically areas with left-over material.

Some of the 3D CAD/CAM Features

Modeling Compatibility with digital tablets (i.e. Wacom)	●
Creation of Relief from 2D Contours	●
Customized Compression Modes	●
Library of customizable profiles	●
Basic sweeping tool (profile along a curve)	●
Advanced sweeping tool (profiles between rails)	●
Professional sweeping tool (with compression profile)	●
Rope or Twist effect	●
Fit sweeping creat 3D relief from 3 views	●
2D geometric tools (cf. 2D geometric tools in 2D features list)	●
Conversion of text in vectors (cf Dynamic Text in 2D features list)	●
Auto-Conversion of Grayscale Images into 3D Relief	●
Modification of grayscale heights	●
Smoothness set-up features in grayscale conversion	●
Conversion of 3D-Relief in Grayscale image	●
Matrix duplication of 3D-Relief models	●
Circular duplication of 3D-Relief models	●
Duplication of 3D Surfaces along a curve	●
Slicing of 3D-Relief (to retrieve contours)	●
Boolean operations (add, subtract, merge min., merge max...)	●
Male & Female flip	●
Smoothing	●
Weaving (Celtic-style 3D design tool)	●
Bas-Relief details enhancement	●
Raise details feature	●
3D textures library	●
Advanced 3D Texturing Fractal	●
Advanced 3D Texturing Spread	●
Fast 3D Viewer	●
Camera position customizable in 3D-Viewer	●
Lighting position customizable in 3D-Viewer	●
High Quality Ray-Tracing Rendering	●
Materials library for rendering	●
Pre-loaded scenes for more realistic rendering	●
Rendering Background customizable	●
3D-Clay Sculpting tools	●
Hand-style sculpting (strength, depth, radius...)	●
Advanced sculpting using Color Masks	●
Mirrored Sculpting feature (unlimited)	●
Re-adjust 3D-Relief height	●
Tool tester to preview machining result from a tool	●
Remaining material calculation	●
Extraction of the contours of the remaining material	●
Facet (flat skin)	●
Measurements tools (see same section in 2D features list)	●

Some of the 2D & 2.5D CAD/CAM Features

INTERFACE	Pro Snap Tools (grid, gravity, center, on a point, middle...)	●
	Import/Export Graphic Files Format (BMP, TIFF, EPS, AI, JPG...)	●
	Import/Export Mechanical Files Format (DXF, KCD, HPGL, PLT, IGES, ISO, WMF, *NC...)	●
	Library of Engraving & Signs Symbols	●
	Advanced Zoom / Automatic Save (custom) / Customized Grids and Guides	●
	Dynamic Measure Tools (Distance, Perimeter, Angle, Surface...)	●
2D TOOLS	Geometrical 2D design tools	●
	Free-hand design (mouse or digital pad)	●
	Trim feature / Extend Curve tool	●
	Advanced Nodes Editor / Intersection locator	●
	Dynamic Text Mode Editor / Create-your-own Fonts	●
	Surface builder (sphere, cylinder, cone, tore, cube...)	●
SURFACE TOOLS	Revolution Surface (partial, full, angle...)	●
	Advanced Surface Tools (Coons, Network, Ruled, Skinned, Swept)	●
	Parallel Projection on surface	●
	Extend / Merge / Untrim surfaces	●
VECTOR TOOLS	Scan to Vector (B&W, Color, Raster to Vector, Stroke Line)	●
	Transform Tools (Boolean, merge, subtract, add...)	●
	Matrix / Circular / Select & Drop duplication with advanced set-up	●
	Duplication along a curve with advanced set-up	●
	Homothetic duplication along a curve	●
	Mirror Duplication and Flips / Morphing	●
	Offset (Outline/Inline, Round & Flat Corners)	●
	Conversion in Art & Segment / Curve Segmentation	●
	Reverse contour directions	●
	Auto-Conversion of Rough curves to straight shapes	●
APPLICATIONS	Alignment Tools (between objects, on table, resize...)	●
	Matrix Layout (Serialization) / Dials / Rulers wizard	●
	2D Texturing with 20+ customizable styles	●
	Free Form Nesting (angle rotation, direction, starting point, tool clearance...)	●
	Crop/Punch tool/Envelope/Morphing	●
	Color for CAM (Shortcut Vectors to G-Code, unlimited colors)	●
	Inlaid Work (offset, angle radius, nesting on male pieces...)	●
	Cutting strategies (in, out, bridges, round corners...)	●
	Plotting (center tool on vector, one way, forward & backward...)	●
	Drilling (spot-drill, multi-step with Z up, multi-step without Z up...)	●
CAM	Engraving (step-over, pass thickness customizable, conventional or climb milling...)	●
	Multi-tool Sequence (unlimited tools upload, fully custom...)	●
	Milling/Pocketing (step-over, pass thickness customizable, angle definition per pass...)	●
	Intaglio (V-Carve, standard or optimized mode)	●
	Preview of remaining material	●
	3D-Real life Toolpath Simulation	●
	Tool Creation Wizard (Bit types or Beams, Dimensions, Feed rates...)	●
	Tangential Entry and Exit / Custom Bridges	●
	2, 3 and/or 4 Axis Machining / Time Estimate / Fine-Tuned Post Processor at Installation	●

The leading solution for CNC mechanical machines

Medals/Mint, Mould, consumer goods



Luxury articles, jewelry...



Sign industry, wood working



Industry, plastic...

Jinan Style Machinery Co.,Ltd

Tel: +86-531-83161518

Fax: +86-531-83161518

Mob: +86-18954101518

Skype: stylecnc

Email: info@stylecnc.com

Website: www.stylecnc.com

**Address: Room 221-1,YongDa Buliding,NanQuanFu Street,
LiCheng District,Jinan City,Shandong Province,China**



4 axis cnc foam cutter



Disc auto tool changer cnc router



Economic auto tool changer cnc router



4x8ft wood cnc router



Stone cnc router STS1325



4 axis ATC cnc wood router